
Betriebsanleitung ATU Software

Die komplette Anleitung befindet sich auf der Software und ist über den „**Help**“ Button im Hauptfenster zu erreichen.

In Kurzform:

- Software installieren
- Programm starten
- Gerät einschalten und anschließen (COM Port)
- [CONN] Button anklicken und in dem sich öffnenden „communication window“ den Port auswählen.
- Mit „OK“ bestätigen
- [CONN] Button wechselt zum [DISKONN] Button (so kann die Verbindung bei Bedarf wieder getrennt werden)
- **Um Daten vom Gerät hochzuladen, den [GET] Button anklicken**
- Um ein oberes und unteres Limit der Messgrößen einzustellen (ein Über- bzw. Unterschreiten wird im Diagramm farblich hervorgehoben) den [SET] Button anklicken.
- Mit [SAVE] können die Messdaten auf dem PC gespeichert werden
- Mit [LOAD] werden gespeicherte Messdaten vom PC abgerufen

Betriebsanleitung ATU Software

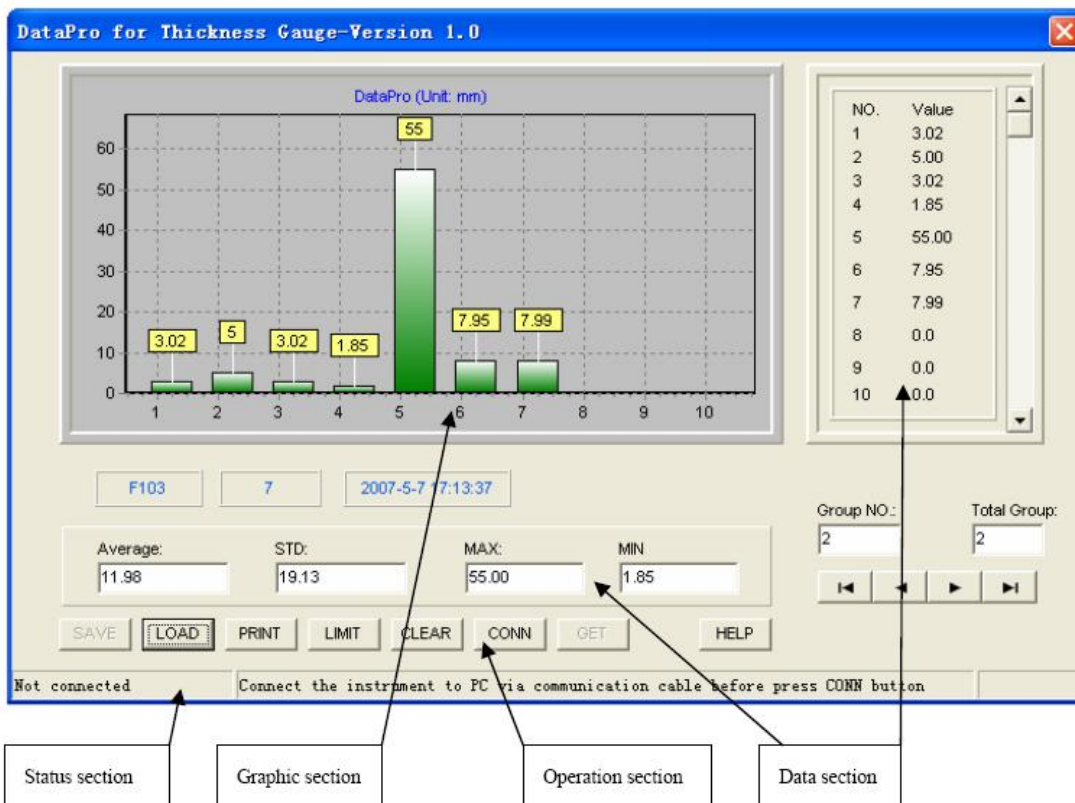
Thickness Gauge data processing

1. Introduction

The software is a data processing software for thickness gauges , running on microsoft Windows system. It can be connected to the instrument via communication port (COM or USB port), read the measured data stored in the instrument memory, transmit the measured data to PC, process the measurement data, display the visualized image, store the measurement data into database, load or remove the measurement data stored in database at any time, and output the measurement data to the printer connected to computer.

2. User Interface descriptions

The main software interface is shown below:



2.1 Graphic section

Betriebsanleitung ATU Software

The section can display ten data histogram of one group at the same time. Data value is given above each bar. For the data scroll display, it is controlled by data section.

2.2 Operation section

The control buttons on the section can be used to control the software to finish various preset functions. Description about the function of each button:

[SAVE]: save current measurement data into database.

[LOAD]: load/delete the stored measurement data from database.

[PRINT]: output the current displayed measurement data to printer connected to computer.

[LIMIT]: set the tolerance limit for the alarm display about measurement data

[CLEAR]: clear current data buffer.

[CONN]: select the PC USBG port to be used, and establish connection with instrument.

[GET]: download measurement data file stored in instrument memory.

[SET]: instrument parameter configuration online. This function is not available for this version.

[HELP]: get help about the software

2.3 Data section

Display measurement data, and can display ten data of one group at the same time. The scroll button at the right side of data section can be used to control the measurement data in scroll way, and can be used to control the data display on data section and graphic section. In addition, data section can also display the statistic value about measurement data, including mean value, standard deviation, Max value, Min value, and measurement times.

2.4 Status section

Its left part indicates the current connection status.

Betriebsanleitung ATU Software

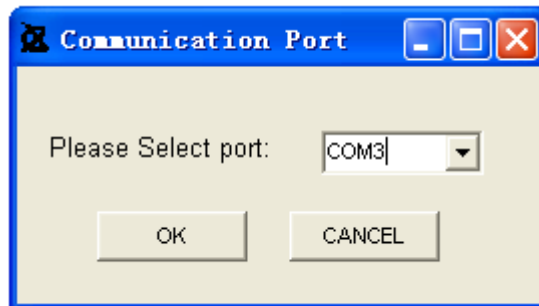
3. Instruction manual

3.1 Software installation

The software is a “Green” software - no file will be generated under Windows’ system directory after installation. Run the installation program, choose the required installation directory, and then the software will be installed into the specified directory.

3.2 Connection measurement

Before the connection, check whether the instrument is turned on normally first, whether the communication cable is normally connected to the serial port of computer. Click [CONN] button, open the “Comm Port” window, choose the port name to be used for instrument connection, click “OK”, and then the software will check whether the communication between software and instrument is normal. If success, it will establish connection with instrument, and display the connection status on status section. Then, the [CONN] button will change to [DISCONN] button. Click [DISCONN] button, the connection with instrument will be broken.



Under connection status, you can use [GET] button to download the measured data from instrument memory. Or you can use [SET] button to configure the instrument online.

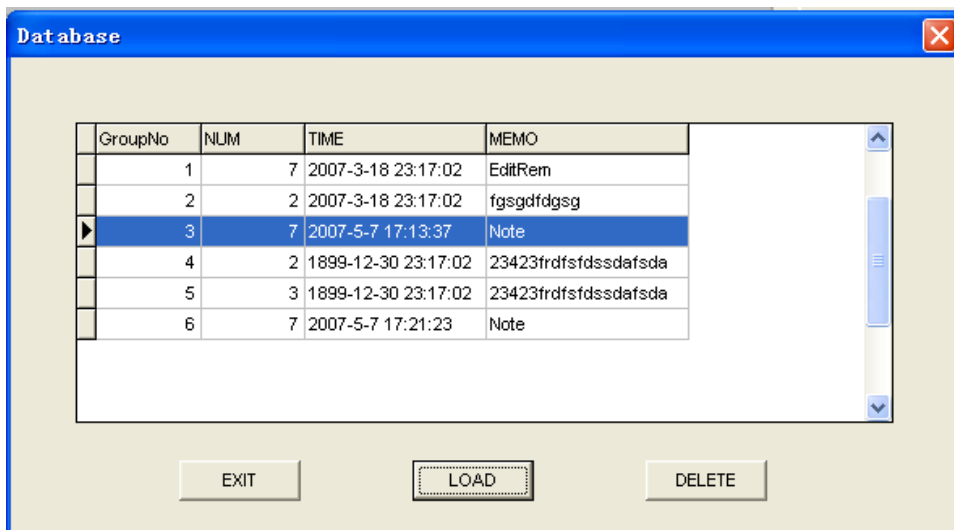
3.3 Data access

With [SAVE] button, you can save the measurement data into database. The measurement data is stored in database in grouping form.

Betriebsanleitung ATU Software



With [LOAD] button, you can open the “Database” window:



You can load the measurement data group, or delete the specified data group.

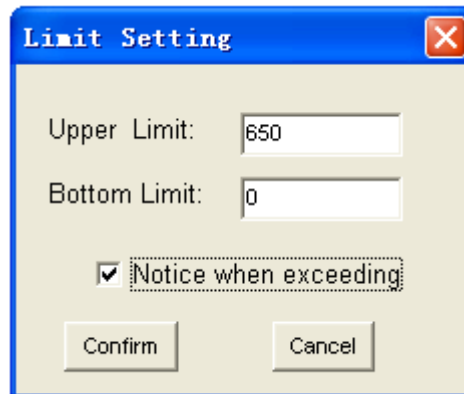
3.4 Display and print

Measurement data will be displayed in bar diagram on graphic section and data section, and 10 pieces of measurement data in current measurement data group will be displayed at the same time. For data scroll, it is controlled by the scroll buttons at the right side of data section. Following items will be displayed at the bottom of data section: arithmetical mean of current measurement data group, standard deviation, Max value and Min value.

You can set the upper and lower limits for normal data; so overbound data can be displayed in
 ATU-BA-d-1310 5

Betriebsanleitung ATU Software

special way to prompt you. Click [LIMIT] button, open “Limit Setting” window:



Selecting “Notice when exceeding” means that the over limit prompt function is enabled. Then, enter the required upper and lower limits respectively. If over limit prompt function is enabled, the measurement data that is over the limit will be displayed in red (graphic section).

Click [PRINT] button, and Click “Print report” (printer icon) button in this window, then the current measurement data will be printed out on printer connected with computer. A4 is recommended for print paper.

4. Operating conditions

4.1 Microsoft Windows 98, Microsoft Windows 98 SE, Microsoft Windows NT 4.0, Microsoft Windows 2000, Microsoft Windows ME, Microsoft Windows XP

4.2 Color display system supporting 800x600 resolution or above

4.3 For Microsoft Windows 98/Microsoft Windows 98 SE/Microsoft Windows NT 4.0 OS, it is required to install Microsoft MDAC 2.6 or late versions, as well as Microsoft Jet 4.0 Service Pack 3 or late versions.

5. Special comments



Sauter GmbH

Ziegelei 1
D-72336 Balingen
E-Mail: info@sauter.eu

Tel: +49-[0]7433- 9933-199
Fax: +49-[0]7433-9933-149
Internet: www.kern-sohn.com

Betriebsanleitung ATU Software

Microsoft Windows 98, Microsoft Windows 98 SE, Microsoft Windows NT 4.0, Microsoft Windows 2000, Microsoft Windows ME, and Microsoft Windows XP are products of Microsoft Company. Please refer to the description about Microsoft products, and select the legal product.

Microsoft MDAC and Microsoft Jet are data processing products of Microsoft Company, and Microsoft is responsible for the related technical support. During the installation and operation of Microsoft MDAC and Microsoft Jet, if any problem or system failure occurs, our Company has no responsibility to answer or solve it.